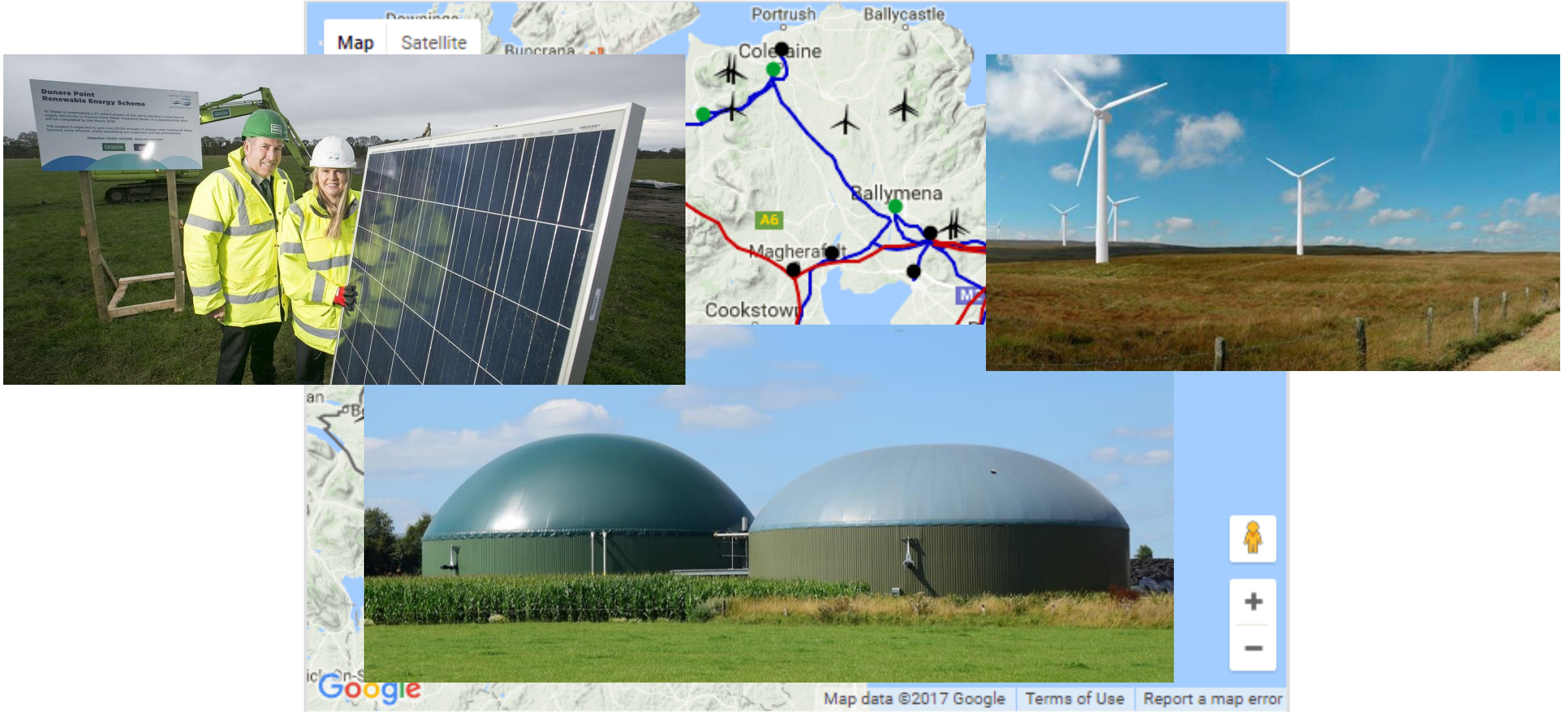


An overview of sustainable energy r&d in Northern Ireland

Dr Simon Murray

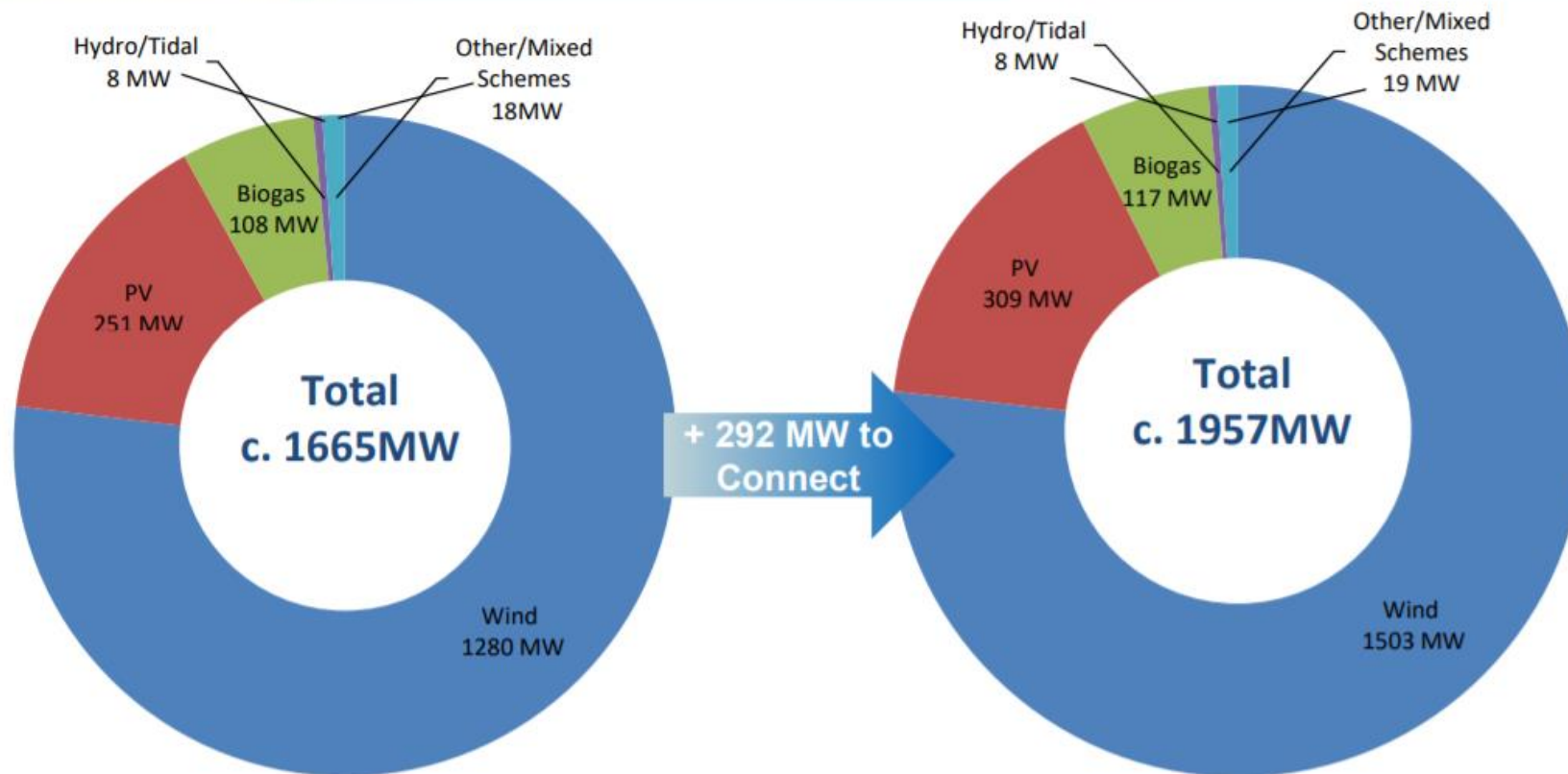
Project & Commercialisation Manager, CASE

Energy in Northern Ireland



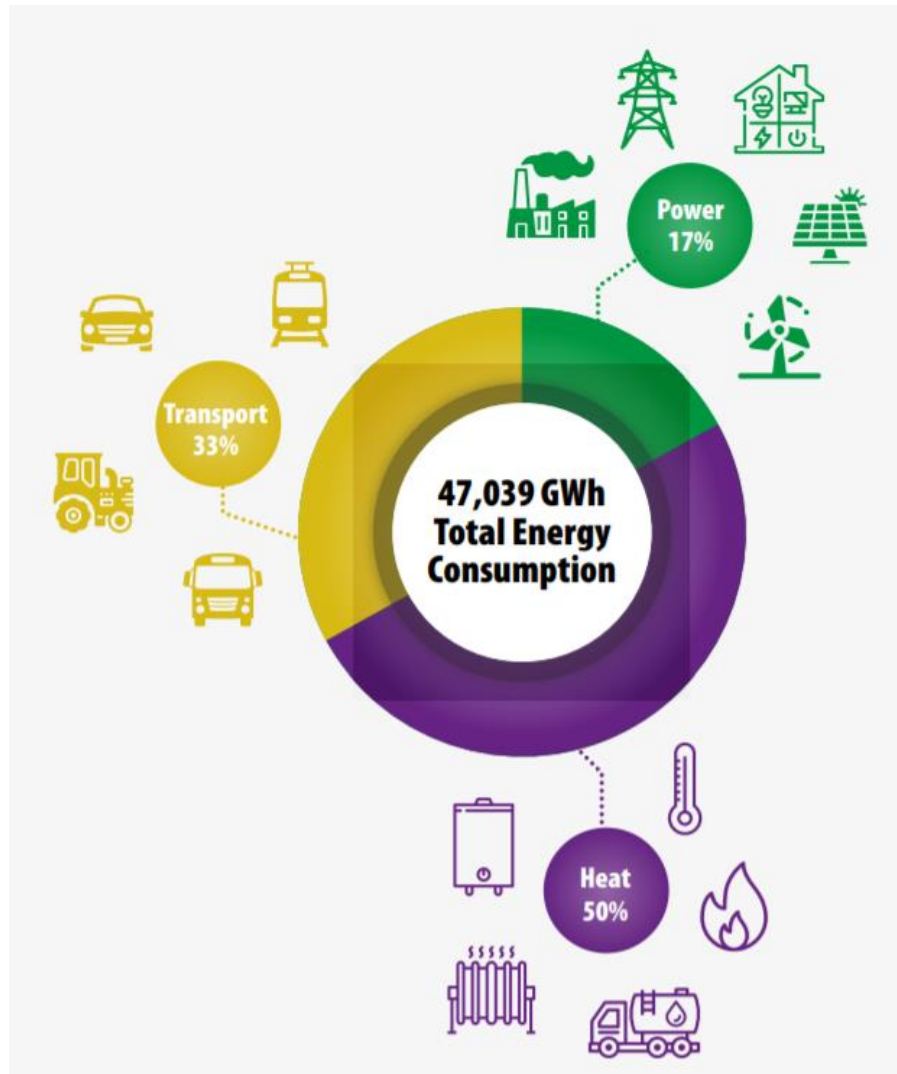
Renewable Power Generation

Renewable Generation Status – Q3 2019



NI Connected Renewable Generation Technology

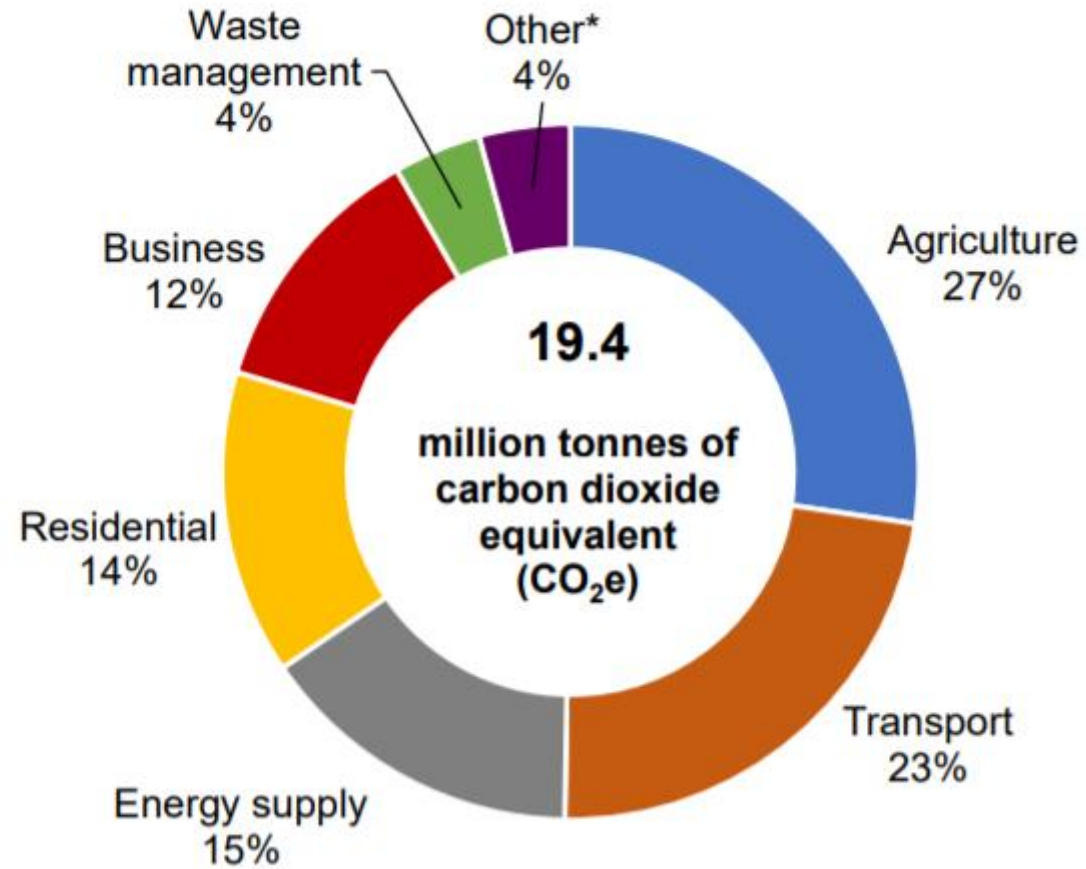
NI Connected and Committed Renewable



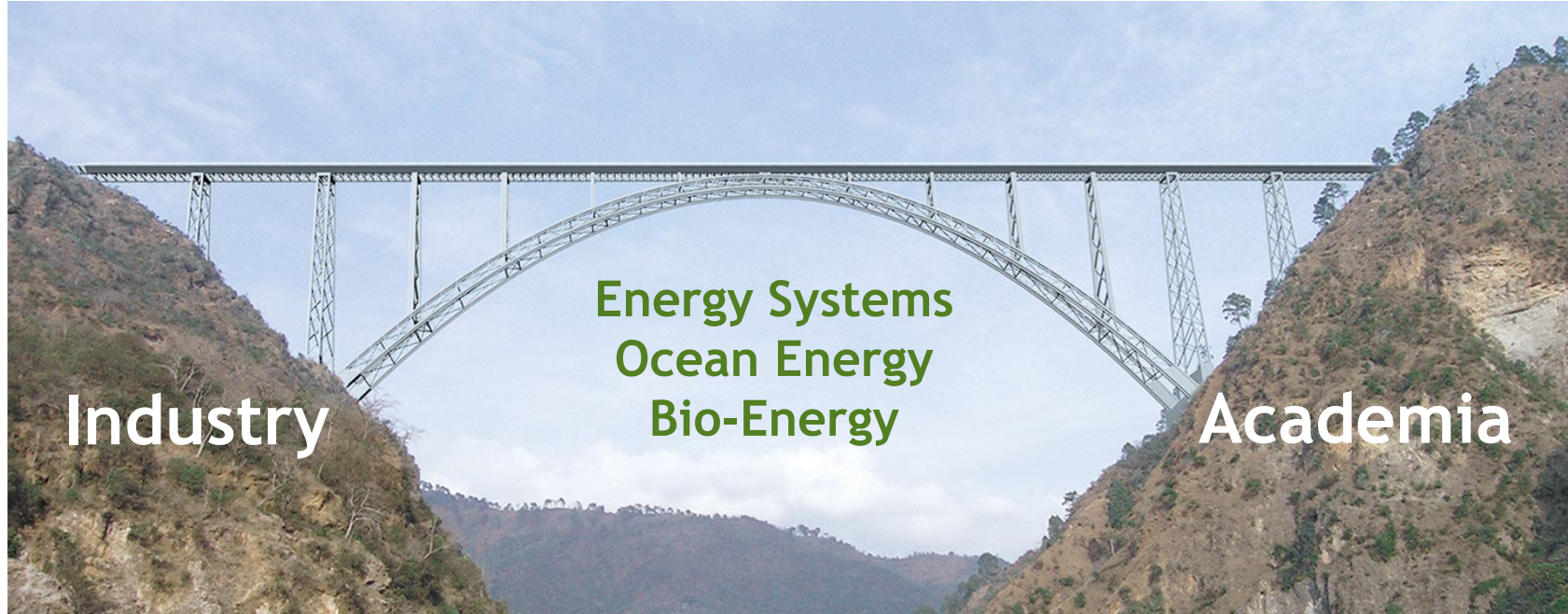
Comparison of energy expenditure and central heating type by country – NI, UK, RoI

	Proportion of weekly energy expenditure that is spent on:			Proportion of households with central heating that is:		
	Electricity	Gas	Other fuels	Oil	Gas	Other
Northern Ireland	47%	14%	39%	68%	24%	8%
UK	50%	44%	6%	5%	85%	11%
Republic of Ireland	47%	19%	34%	41%	35%	24%

Carbon Emissions



CASE









Thank you

Website: <https://www.case-research.net>

Contact: s.murray@qub.ac.uk

