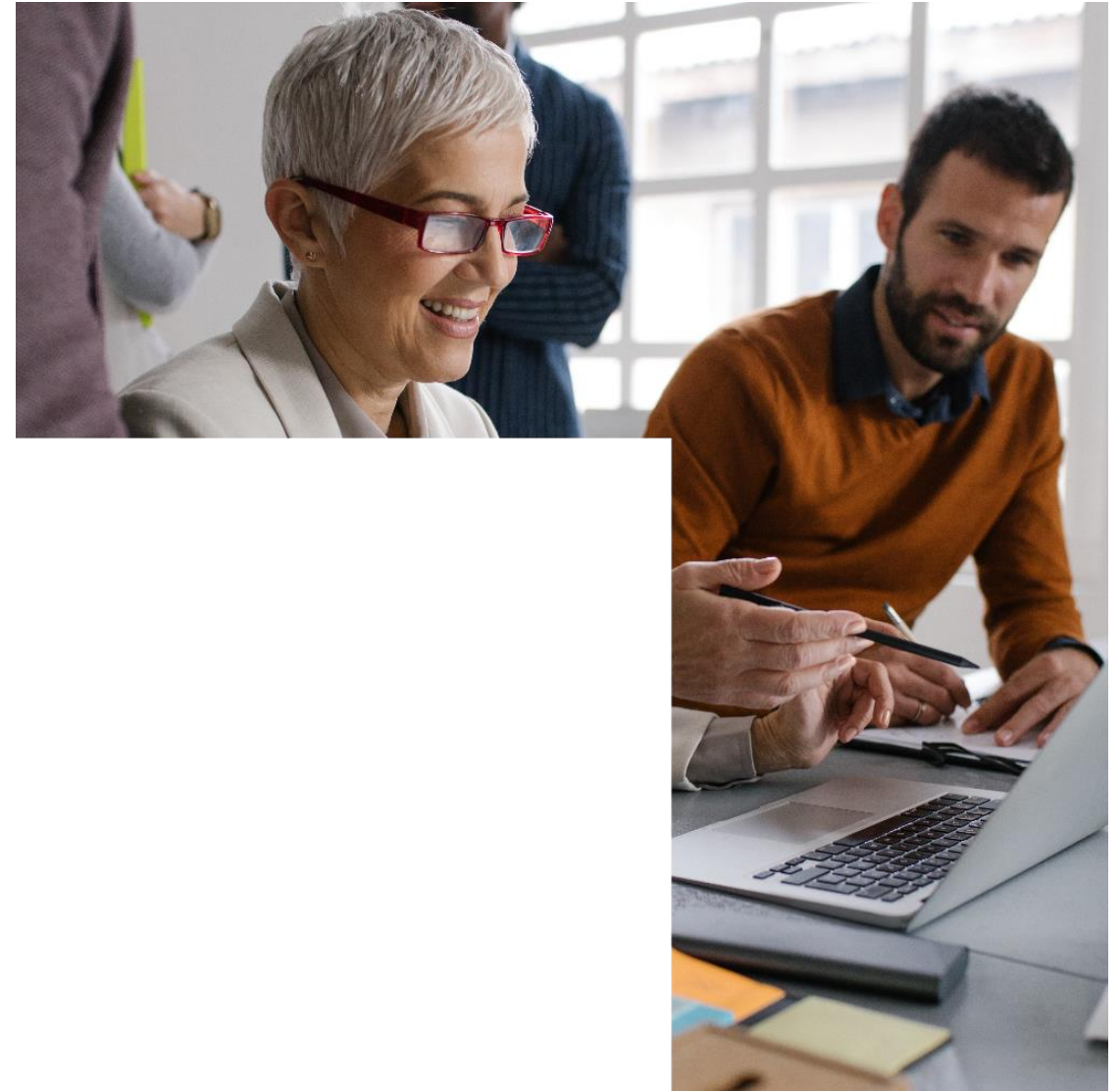


# IEMA Connect

From strategy to delivery:  
Building the capability to  
embed sustainability



**CGI**

# Our strategy and goals

Our strategy delivers on the United Nation's Sustainable Development Goals by working to minimize impact and support positive environmental outcomes. Setting ambitious goals is essential to driving better innovation, collaboration and transparency.



## Research and Innovation

Integrating sustainability innovation into our ways of working and offering to our clients, partners and communities.



## Climate Action and Environment

Strengthening our commitment to meet the target of limiting global warming to 1.5°C by focusing on our science-based near-term and long-term targets. Maintaining and enhancing our circularity efforts. Emphasis on sending zero to landfill, eliminating single use plastic and reducing the use of plastics.



## Future fit for members, suppliers and communities

Creating awareness and visibility regarding supply chains and member sustainability activities to support the communities in which we operate and cultivate a sustainable organisation.



## Robust Organisation

Unlocking the business value of organisational sustainability by strengthening our sustainability DNA.



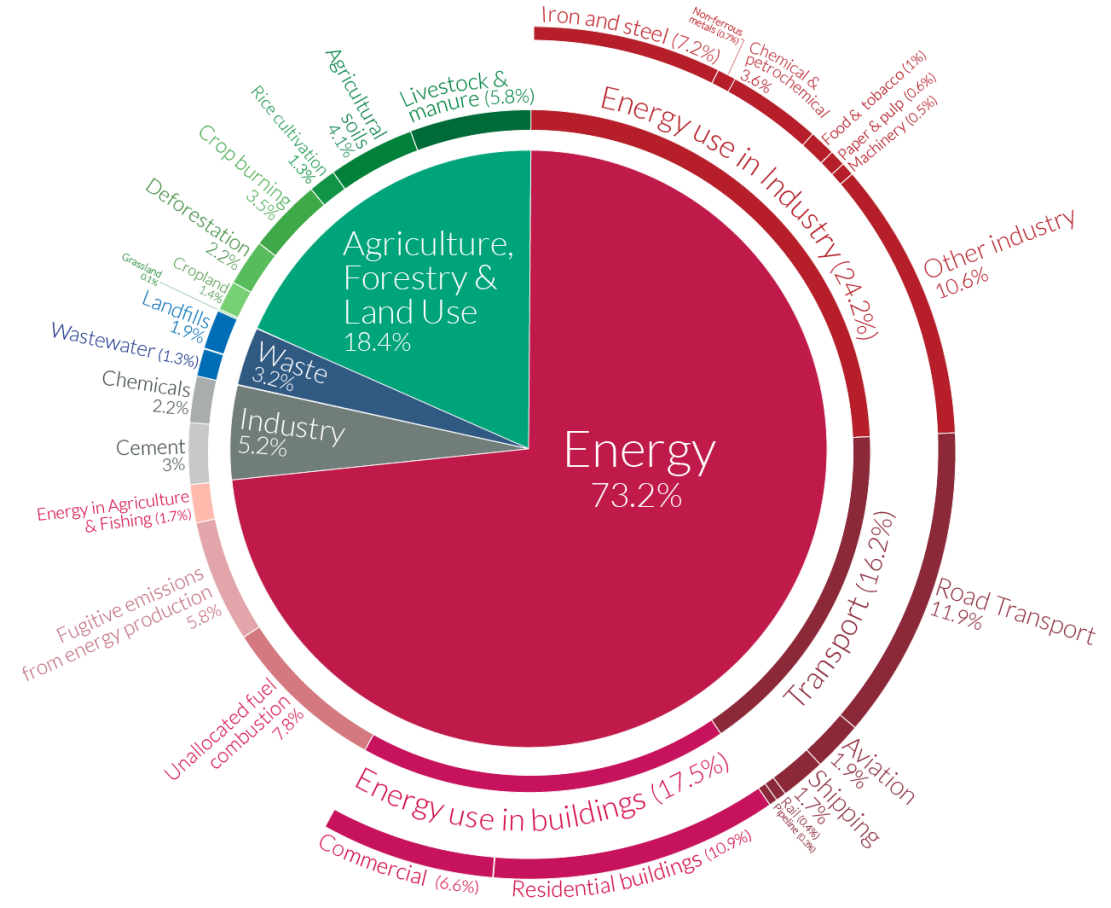
## Nature and Biodiversity

Developing new approaches for reporting on nature and biodiversity internally and externally. Promoting and restoring nature at our sites and in our wider communities.

# Global greenhouse gas emissions by sector

Our World in Data

This is shown for the year 2016 – global greenhouse gas emissions were 49.4 billion tonnes CO<sub>2</sub>eq.



OurWorldinData.org – Research and data to make progress against the world's largest problems. Source: Climate Watch, the World Resources Institute (2020). Licensed under CC-BY by the author Hannah Ritchie (2020).

## 2 years



## 10 years



Risk categories | Economic | Environmental | Geopolitical | Societal | Technological

# Strategies for sustainability

Resource  
optimisation

Operational  
excellence (Seven S)

Corporate citizenship  
and social  
sustainability

Research and  
Innovation

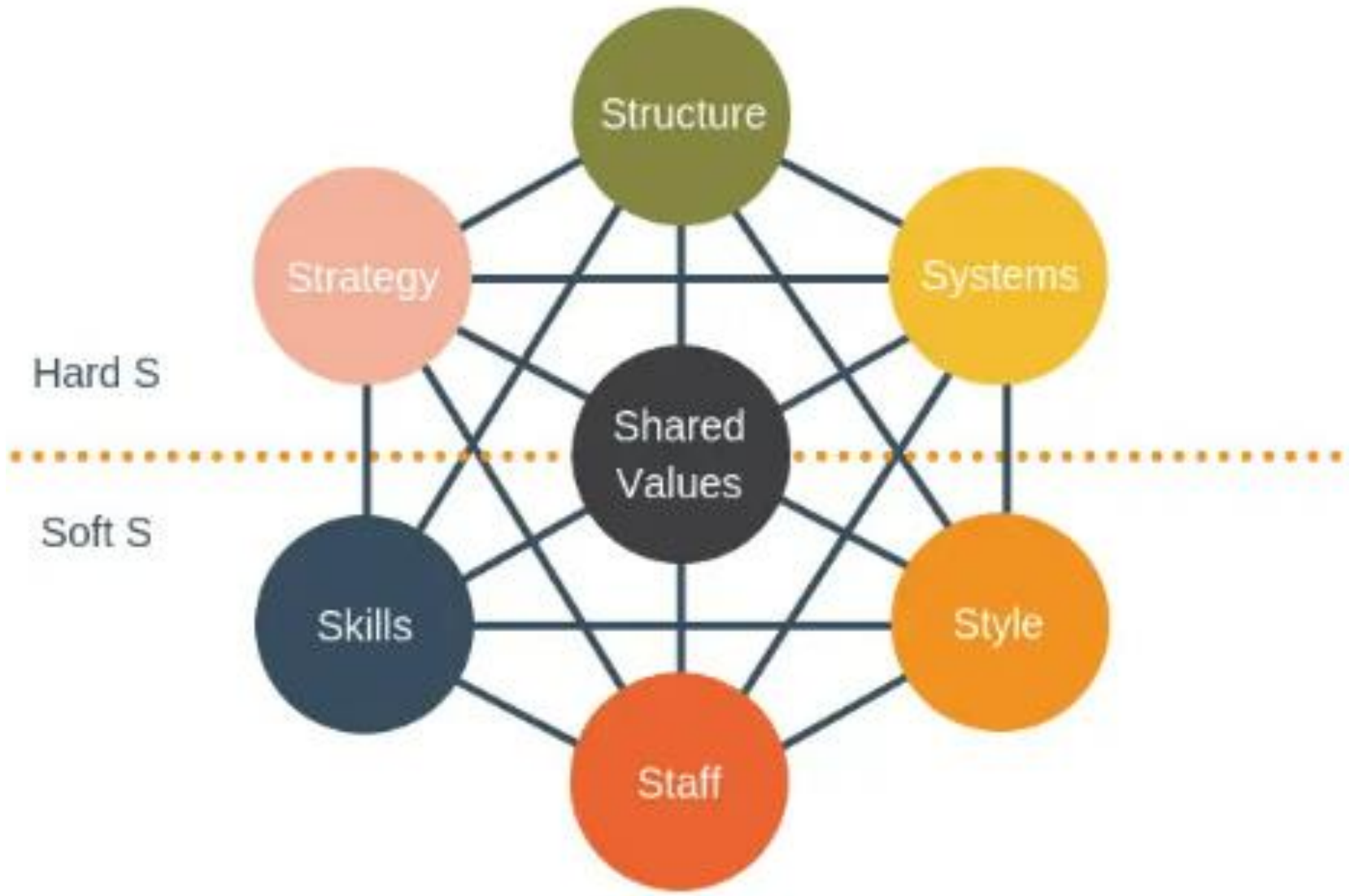
Sustainable  
Procurement, supply  
chain and logistics

Net-Zero

Collaboration and  
partnerships

Communication and  
Engagement

Governance (Multi-  
Layer)



Internal



What structure do we need to execute the strategy?

Structure

Systems

What business system do we need to use or invent to execute the strategy?

Which business system do we need to use or invent to execute the strategy?

Shared Value

Style

What leadership style and cultural qualities will help us to achieve a strategic objective?

Strategy

What should we do to solve the specified business problem?

Staff

How should we help our managers in their growth?

Skills

What are the specific skills that will help us? What skills do we need to develop?

# Hard Skills

---



Refer to teachable skills or **job-specific abilities** that can be quantified or measured.

# Soft Skills

---



Refer to an individual's **social ability** and how they relate to and interact with other people.



- S Scope**  
Establish sustainable governance structures, values and strategy in pursuit of long-term value.
- T Target**  
Set meaningful and measurable sustainability goals that drive performance.
- E Execute**  
Integrate sustainability into business models, operations, finance and controls to make sustainability a reality.
- P Progress**  
Benchmark performance and report on sustainability targets to demonstrate accountability and transparency.
- S Strengthen**  
Anticipate change and evolve sustainability strategy to meet new regulations, standards, expectations and needs.



Thank you